

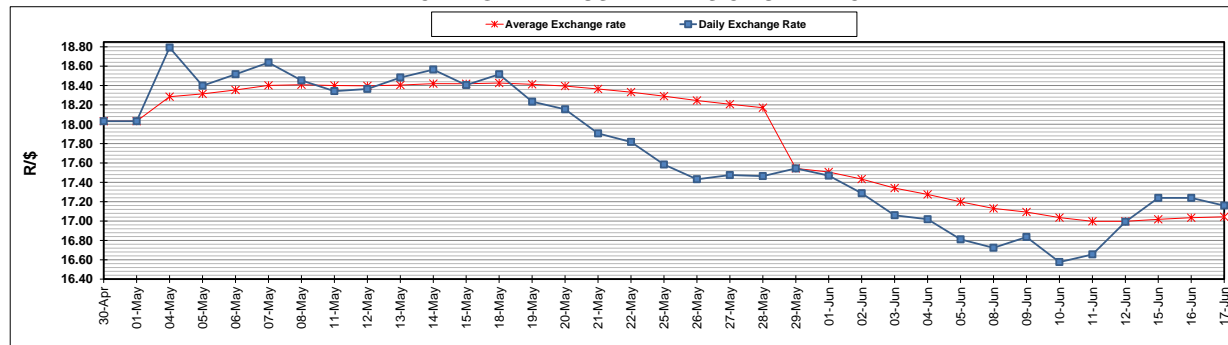
	PETROL 95 ULP	PETROL 93 ULP & LRP	DIESEL 0.05%	DIESEL 0.005%	ILL. PAR.
GAUTENG PUMP PRICE (SA c/l) AS FROM 03/06/2020	1,340.000	1,320.000	-	-	-
WHOLESALE PRICE (SA c/l) AS FROM 03/06/2020	-	-	1,130.560	1,138.960	489.828
SINGLE NATIONAL MAXIMUM RETAIL PRICE	-	-	-	-	597.000
BASIC FUEL PRICE - 17/06/2020 (SA c/l)	579.576	558.714	582.584	586.285	513.140
PRESS RELEASE CONTRIBUTION TO BFP 03/06/2020 - 17/06/2020 (SA c/l)	392.770	382.770	379.630	388.030	285.128
UNIT OVER/(UNDER) RECOVERY - 17/06/2020 (SA c/l)	(186.806)	(175.944)	(202.954)	(198.255)	(228.012)
AVERAGE BASIC FUEL PRICE 29/05/2020 - 17/06/2020	527.866	507.801	531.574	535.697	475.917
AVERAGE UNIT OVER/(UNDER) RECOVERY 29/05/2020 - 17/06/2020	(160.382)	(150.317)	(156.659)	(152.167)	(199.361)

ANALYSIS MOVEMENT OF AVERAGE OVER/(UNDER) RECOVERY

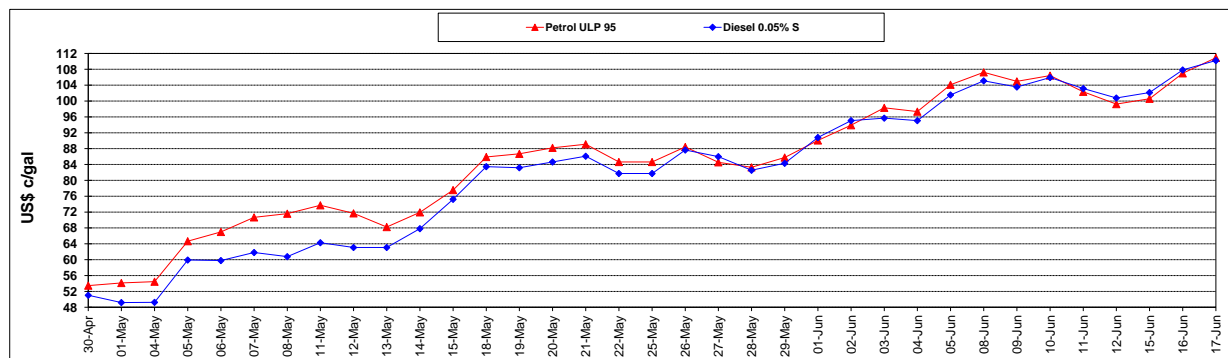
	PETROL 95	PETROL 93	DIESEL 0.05%	DIESEL 0.005%	ILL. PAR.
- MOVEMENT IN INTERNATIONAL PRODUCT PRICES	(195.321)	(183.928)	(191.843)	(187.625)	(230.861)
- MOVEMENT IN EXCHANGE RATE	34.939	33.611	35.185	35.458	31.501
AVERAGE UNIT OVER/(UNDER) RECOVERY 29/05/2020 - 17/06/2020	(160.382)	(150.317)	(156.659)	(152.167)	(199.361)

R/\$ EXCHANGE RATE - (R/\$17.1598 - 17/06/2020)

EXCHANGE RATE USED IN BASIC FUEL PRICE



INTERNATIONAL PRODUCT PRICES OF BASKET USED IN BASIC FUEL PRICE



BASIC FUEL PRICE IN SA CENTS PER LITRE

